



OCTOBER 2010

Free Wheeling



One of many Dunes on the Simpson Desert Trip

Notice Board



VFWDC GENERAL MEETING VENUE

The club meets at the Bowling Club Rooms, Noble Park Football Club, 46-56 Moodemere St., Noble Park on the 1st Wednesday of every month at 8.00pm (No meeting January). Members and Guests are welcome to dine at the Bistro before attending the meeting.

First **WEDNESDAY** of each month 8.00PM Start

Venue:

Bowling Club Rooms (Next to Car Park)

Noble Park Football Club
46-56 Moodemere Street
Noble Park
Melways ref: 89 D4



FREE WHEELING

Hello and welcome to the October newsletter. It is a bit late this month as a result of trying to get content. With the president away and lacking a secretary, content has been a little thin! Unfortunately, this month we have no trip reports, no president's report, no articles from members, no new trips, and only brief minute notes from the Vice President.

It is a little sad, but the good news is that you can help. Please consider running a trip or writing an article for the newsletter. If you go on a trip, please ensure that someone writes a report and sends it to me.

Cheers,

Shane Michelin

Editor@fwdc.com
(9801 6576 or 0417 784 599)

PRESIDENT'S REPORT

Our beloved president is away on holiday at the moment, so there is no President's report this month.

**COMMITTEE OF MANAGEMENT
2010-2011**

President	Bruce Cremonesi	president@vfwdc.com 0400 425 296
Vice President	Mark Kochan	vicepres@vfwdc.com 0412 544 668
Treasurer	Phil Griffith	treasurer@vfwdc.com 0419 865 472
Secretary		secretary@vfwdc.com

Minutes of General Meeting September 2010

General Meeting September 2010

Due to the lack of a club Secretary, the minutes this month are rather brief.

Visitors

Peter Mitchell
Neville Van Leaven
Andre D-Walt
Bob Wells

Apologies

Steve Pitcher
Mick Harris
Maxine Ryan
Lesley Peters
Brian Martin
Aline Van Buiten

Attendance

(Per attendance book)

Correspondence In

FWDV - 'Leisurefest 2010' Raffle tickets
LPGas Conversion pamphlet
RFDS July newsletter (Vic Edition)
Ritchies Supermarket—Ref Changes to community Benefits programme
TLCA Vic Magazine—Aug 2010
LROC Vic magazine—Aug 2010
4x4 Outdoor Fishing & Boating Expo

No raffle this meeting

GENERAL COMMITTEE

Assistant Secretary		assist@vfwdc.com
Trip Co-ordinator	Daniel Robinson	trips@vfwdc.com
Newsletter Editor	Shane Michelin	editor@vfwdc.com
Association Delegate	Ashley Martin	
Training Officers	Ashley Martin	John Partridge
	Michael Rodger	Mark Kochan
General Committee	Luke Teunissen	
Web Manager	Paul Ryan	web@vfwdc.com

Club Details

Registered Name	Victorian Four Wheel Drive Club Inc
Registration No	A002184F
Correspondence	PO Box 778 Dandenong Vic 3174
Email	secretary@vfwdc.com
Website	www.vfwdc.com
Meetings	Held 8pm, first Wednesday of each month, excluding January (no meeting).
Location	Noble Park Football Club (Bowling club near car park) 46-56 Moodemere Street Noble Park Melways ref: 89 D4
Newsletter	All articles and photographs to be submitted prior to 20 th of each month to editor@vfwdc.com
	The Victorian Four Wheel Drive Club is an affiliated club of the Victoria Association of Four Wheel Drive Clubs Inc (VAFWDC)

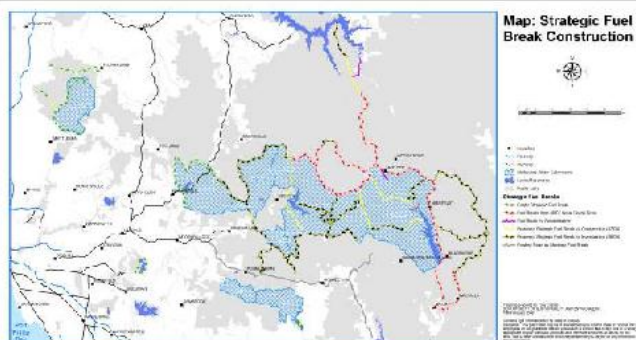


protecting Melbourne's precious water supply

The Department of Sustainability and Environment (DSE), Parks Victoria and Melbourne Water are working together to protect Melbourne's world class water supply. Melbourne's water catchments provide drinking water for more than 4 million people. A network of around 600km of fuelbreaks is being constructed to help protect these invaluable forest catchments from the threat of wildfire.

What's happening?

350kms of fuelbreaks were built to protect the Thomson and Upper Yarra Catchment during the Great Divide Fire 2006/7. These fuelbreaks are being maintained in readiness for the fire season. Additional fuelbreaks in and surrounding the catchments have undergone environmental and cultural assessments, approvals, design planning and consultation. These fuelbreaks will be constructed over the next two years.



Why is this being done?

The water catchments in our forest areas to the east and north of Melbourne produce 90% of Melbourne Water's water supply, 80% of which originates in wet forest types. It is essential to protect the catchments from wildfire, as the loss of forest from wildfire would affect water quality, and in the longer term reduce the amount of water in our reservoirs.

What will the breaks look like?

The breaks will generally be 20 metres wide. In most areas, 30% canopy cover from over-storey trees will be retained to provide shade and connection of trees for wildlife. Vegetation coverage will be retained on the ground and annual maintenance slashing will be undertaken by Melbourne Water and DSE to maintain access.



VFWDC



ADVERTISING DIRECTORY

ALL CEREMONIES

Flair-Excellence-Sensitivity

Sue A Lyne

Civil Celebrant

Ph: 9787 5665

BUSH-B-Q

Manufacturer of the Barbeque of the Outback

Don & Thelma Montague

Ph: 9808 1200 Mob: 0414 355488

Email: info@theldon.com.au

Web: www.theldon.com.au

CAMSEW-SEWRENT

Domestic & Industrial Sewing Machine Repairs

Ron Camm

Mob: 0419 884920 Fax: 9766 4598

Email: sewrent@camsew.com.au

FRANKLAND ELECTRICS PTY LTD

Electric Motor Sales, Service, Repairs & Modifications

Power Tool Service & Repairs

Peter & Janine Frankland

Ph: 9555 6624 Fax: 9555 6565

Email: fralecpete@aol.com

METALAIR INDUSTRIES

4x4 Camper Trailers, Accessories &

Camping Equipment

David Hughes

Ph: 9798 1492 Fax: 9798 2593

Email: metalair@tenex.com.au

R & D BROWN PAINTING SERVICES

Quality Workmanship at the Right Price

Ray & Dawn Brown

Ph: 5967 1437 Fax: 5967 1439 Mob: 0411 799054

TAYKA TRIP TRAILER HIRE

Off Road Camper Trailer Hire

Bill Harwood

Ph: 9707 2144 Mob: 0414 477 503

TECOMA ELECTRICAL SERVICES

Industrial, Commercial & Domestic

24hr Emergency Service

Ian Warburton

Ph: 9754 2341 Mob: 0409 797675



How will they be built?

The breaks are generally located on ridgelines and generally coincide with existing roads and tracks. Machinery is being used to clear most of the understorey and some of the larger trees from the width of the break. Large material will be assessed for commercial use and sold with the necessary licences and approvals. Material appropriate for firewood will be made available through the normal DSE firewood processes. Any remaining debris will be burnt or mulched.

Where are the breaks?

The breaks stretch from the Thomson catchment in the east through the Upper Yarra, Armstrong, O'Shannassy and Marondah catchments to Wallaby Creek near Kinglake north of Melbourne. Also included are the smaller McMahon's and Starvation catchments.

How will the fuelbreaks work?

The breaks will not stop a forward moving wildfire in extreme conditions. They will provide a safe and effective area from which back-burning can be undertaken. Critical fire-fighting time is saved if the strategic fuelbreaks are in place. The network will provide an effective break in forest fuel and a well-protected area to assist in fuel reduction burning programs.



How are environmental and cultural impacts managed?

All works on the fuelbreaks have been subject to full assessments for environmental and cultural impacts. The fuel breaks have met requirements under State and Federal Government legislation, particularly the States Flora and Fauna Guarantee Act 1986, Aboriginal Heritage Act 2006 and the Commonwealths Environment Protection and Biodiversity Conservation Act 1999.

External specialists have made recommendations on fuelbreak design and work methods to limit disturbance to native flora and fauna and cultural heritage sites that are listed and therefore protected.

All work on the new fuelbreaks has been dependant on the completion of assessments and approvals. Works are regularly supervised to ensure management prescriptions are complied with.



Published by the Victorian Government Department of Sustainability and Environment Melbourne, April 2008
© The State of Victoria Department of Sustainability and Environment 2008
This publication is copyright. No part may be reproduced by any process except in accordance with the provisions of the Copyright Act 1968.
Authorised by the Victorian Government, © Nicholas Street, East Melbourne
Printed by DSE
Printed on 100% Recycled paper
DSE 9078-1-74200-032-2
For more information contact the DSE Customer Service Centre 136 136
Disclaimer
This publication may be of assistance to you but the State of Victoria and its employees do not guarantee that the publication is without error or is wholly appropriate for your particular purposes and therefore disclaim all liability for any error, loss or other consequence which may arise from you relying on any information in this publication.



Important Notice!



November General Meeting

Please be aware that the November General meeting will be held at **Everything 4wd**. This is the 4wd business owned by our member John Partridge.

The meeting will be a little earlier at 7:30pm.

John will be putting on a BBQ and there will be specials on the night specifically for our club members.

Details:

Everything 4wd
88 Camms Road
Cranbourne
Phone: 59955055

John now has full fitting and service capabilities and will be providing the raffle prize for the night. If there is enough interest, we may get a car up on a hoist for a look see.

LICOLA WILDERNESS VILLAGE - OPEN DAY

Saturday 30TH OCTOBER - all day

Bring your family and friends for a day of adventure and activities on your way through the Alps.

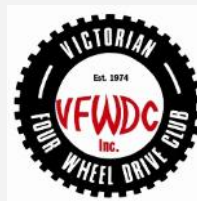
A great weekend as 4WD tracks re-open, hit the road, take the trip from Dargo, Heyfield or Jamieson, through the awesome mountains. Join us on Saturday as we open up the giant swing, canoes, high ropes course, rock climbing and archery, with face painting and a BBQ lunch - it truly will be great fun for everyone.

So print off the flyer attached and show the club, or just come with your own family and friends for a great day out. Weekend accommodation is available but you should book soon as cabins are limited.

Hope to see you here, from all the team at Licola Wilderness Village.

Kind Regards

Cherry Hatherly
 Programs Manager
 Licola Wilderness Village
programs@licola.org.au
 Ph: (03) 5148 8791



CLUB MERCHANDISE For Sale

(Revised Price List)

Club Polo Shirts	\$28.00 ea
Club Polar Fleece ½ Zip Jumper	\$38.00 ea
Club Polar Fleece Full Zip Jacket	\$48.00 ea
Club Sleeveless Reversible Vest	\$44.00 ea
Club Caps	\$15.00 ea
Club Bucket Hat	\$16.00 ea
Club Wide Brim Hat	\$18.00 ea
Club Beanie	\$12.00 ea
VFWDC Sticker (long)	\$ 6.00 ea

We encourage all members to purchase a Club Polo Shirt.

Email your order to committee@vfwdc.com.
 Please ensure you advise size required.



*The 2009 VFWDC
Christmas Party will be held on
Saturday, 4th December (10am-4pm) at*
Myuna Farm

*182 Kidds Road, Doveton
(Melway Map Ref 90 H7)*



- ❖ *Animal Display Centre*
- ❖ *Wetlands Nature Walk*
- ❖ *Aviaries*
- ❖ *Pioneer Theatre*

Prices:	Families	\$18.00 (per 4 people)
	Single	\$ 6.00
	Rides:	
	▪ Pony	\$2.00pp
	▪ Train	\$1.50pp

**Free bags of food for the Kids to feed to the animals*

BYO Meat, Beverages
The Club will provide salads, and soft drinks for the kids.

This year, due to them doing building and works, we are in a different spot.
We have the Pioneer Shed - houses 50-100 people!! Has Fridge, Pie Warmer, BBQ, and
sounds good! Thanks to Ashley for volunteering to be Santa, or talk John McNeill into it!

Bring along the family and enjoy the festivities.



CLUB CALENDAR AT A GLANCE

2010				
September	Wednesday 1 st	General Meeting	Bruce	0400 425 296
	18 th Sep – 1 st Oct	Lake Eyre	Paul Ryan	0401 014 631
October	Wednesday 6 th	General Meeting	Bruce	0400 425 296
	15 th –17 th	Whitfield	Paul Ryan	0401 014 631
	29 th –31 st	Whalhalla and Beyond	Ashley Martin	0438 600 904
November	Wednesday 3 rd	General Meeting	Bruce	0400 425 296
	12 th –14 th	Mystery Pub To Pub To Pub	David Hughes	WK: 97989 1492 HM: 9706 2966 Mob: 0427 865 592
	19 th –21 st	Fishing Trip	Ashley Martin	0438 600 904

UPCOMING TRIPS

DESTINATION	Fishing Trip 2010 – Pineapple Flat, King River
LEADER/CONTACT NO.	Ashley Martin Mob: 0438 600 904
DATE	Friday 19 th November Sunday 21 st November
MEETING PLACE / TIME	McKenzie Reserve, Yarra Glen Friday Morning - 9.30am Friday night - 6.30pm
GRADE	WET: Easy/Medium DRY: Easy
TRIP ACTIVITY DETAILS	
<p>The past few fishing trips the weather hasn't been to kind so here's hoping we have better luck this year.</p> <p>The King River is always renowned for its good fishing and on previous visits there's always something caught (didn't say what though). There is also a large pool that's suitable for the kids to throw a line in. While some may think it's a fishing story I did hook the biggest trout I ever hooked in this pool only to have it spit the lure half a meter from the bank, very depressed after that.</p> <p>The camping area is easy access, suitable for campers and has drop toilets.</p> <p>I set 2 departure times for some members will be leaving Friday morning and another's Friday night. If you can't make either let me know and will advise directions (don't be afraid).</p>	
VEHICLE LIMITS	MINIMUM: N/A MAXIMUM: 10
APPROX KMS	200
LAST AVAILABLE FUEL	PETROL: Mansfield DIESEL: Mansfield
DISTANCE BETWEEN SUPPLIES	N/A
EQUIPMENT REQUIRED	Basic recovery equipment, Fishing equipment
MAPS REQUIRED	N/A
RADIO UHF	12

DESTINATION	Winery Weekend—Whitfield
LEADER/ CONTACT NO.	Paul Ryan - 0401 014 631 Ashley Martin - 0438 600 904
DATE	Fri 15 th —Sun 17 th October
MEETING	McKenzie Reserve, Yarra Glen Time - TBA
GRADE	WET: Easy DRY: Easy

TRIP ACTIVITY DETAILS

Another year gone therefore it's time for another winery tour.

This year we have decided to revisit Whitfield. We were there approx 4 years ago and while we visited some of the wineries didn't get time to see them all. There are great wineries around the area like Chris-mont, Pizzini and plan to visit these and some of the smaller ones.

I will be leaving Melbourne early Friday (late morning, early afternoon) but will also have a meeting time in the evening for those leaving after work. The meeting place at Yarra Glen is large enough to group for those bringing campers/caravans. If you choose to come up Saturday morning it is an easy drive and will possibly organize a meeting place and time depending on numbers.

Camping will be at Valley View Caravan Park which has both powered and un powered sites, onsite caravans and of course a full amenities block. We will be able to have a fire in designated areas so if it a little chilly we can stoke it up to keep warm. Prices will be available at the next meeting. If you are contemplating an onsite van I need to know ASAP to ensure one will be available, I cannot guarantee one if you leave it till the last week.

As we've done in previous years dinner will be an all in affair. I will arrange for a few portable BBQ's for meats and snags and no doubt there will be a few curries/casseroles as well. As we get closer and numbers confirmed we can sort out who is brining what and go from there. Depending on numbers I will cater for breakfast and the final tally can be divided between the group. From memory previous years were approx \$4 pp for bacon, snags, tomatoes, eggs and bread.

APPROX KMS	150
LAST AVAILA- BLE FUEL	P/D: Mansfield
EQUIPMENT REQUIRED	Headache tablets
MAPS RE- QUIRED	N/A
RADIO UHF	12

DESTINATION	Melbourne Cup Weekend—Touring Trip — Walhalla And Beyond
LEADER	Ashley Martin 0438 600 904
DATE	Fri 29 th Oct—Sun 31 st Oct
MEETING	TBA
GRADE	Easy - Medium (Maybe a few hard sections)

TRIP ACTIVITY DETAILS

As I only have the main weekend free I thought it would be suitable to take in some of the great tracks around the Walhalla/Aberfeldy area. The plan would be to meet up Friday night and maybe drive a few tracks before stopping at camp. Saturday will be all driving with a great array of tracks available. There maybe be 1 or 2 harder tracks but these can be avoided for those not willing. There will be no base camp and not suitable for trailers.

Sunday will be more driving but I will be heading home Sunday afternoon. This would be a great opportunity for those with the extra few days to find a lovely camping spot, sit relax or maybe meet up with another Club trip.

VEHICLE LIMITS	MINIMUM: 2 MAXIMUM: 8
APPROX KMS	250
LAST FUEL	P/D: Traralgon
EQUIPMENT	Basic recovery equipment
MAPS REQUIRED	N/A
RADIO UHF	12

DESTINATION	Mystery Pub to Pub to Pub
LEADER/CONTACT NO.	David Hughes WK: 9798 1492 HM: 9706 2966 MOB: 0427 865 592
DATE	12 TH , 13 TH , 14 TH NOVEMBER 2010
MEETING	To be advised
GRADE	C or B
TRIP ACTIVITY DE- TAILS	Traveling anywhere to an unknown destination. Just a fun weekend with a few surprises along the way. Morning Tea and Afternoon tea provided
VEHICLE LIMITS	4 — 12
APPROX KMS	Unknown at this stage
EQUIPMENT	Sense of Humour, Basic recovery gear and a Stubby Holder
MAPS REQUIRED	N/A
RADIO	Ch 12

EVERYTHING 4WD

86 Camms Road, Cranbourne, 3977
P: 03 59955055
F: 03 59955199
E: sales@everything4wd.com.au
W: www.everything4wd.com.au

For all your 4x4 needs

New retail store is now open with full workshop facilities

- Fitting – Servicing – Repairs -

Now selling from the following brands:

Auspit	Milford Cargo Barriers
Boab	Outback Accessories
Bush BQ	Piranha
Camel Camper Trailers	Rhino Roof Racks
Ctek Battery Chargers	Safari snorkels
Don Kyatt Spare Parts	Silverstone Tyres
Dynamic Rims	Sinergex Invertors
Hayman Reese Towbars	Terrain Tamer
Ironman	Tigerz11 winches
King Springs	Xrox Bars
Koni Shocks	xXx Driving lights

Our products include:

Air Jacks	Long Range Tanks
Awnings	Power Monitors
Batteries	Power Outlets
Battery Chargers	Rear Protection Step Towbars
Bullbars	Rear Wheel Carriers
Camper Trailer Hire	Recovery Gear
Camper Trailer Sales	Roof Racks
Compressors	Rooftop Tents
Diff Breather Kits	Snorkels
Driving lights	Spare Parts
Dual Battery Systems	Storage Systems
Dual Battery Trays	Suspension Kits
Fridges	Synthetic Winch Rope
HID Conversion kits	Ute Canopies
HID Driving Lights	Ute Liners
High Lift Jacks	Water Tanks
Inverters	Winches

Discounts available for all 4WD club members





10th Aug. 2010

Christmas Tree Project
51 Belmont Rd. IVANHOE 3079
Ph 94973227 Fax 94994759

Dear Secretary

Over the last 18 years member clubs of the Four Wheel Drive Victoria have supported Oxfam Australia in their annual delivery of Christmas Trees. This has become a very successful fund raising activity selling and delivering fresh green Christmas trees to homes in metropolitan Melbourne.

This letter is to inform those clubs who have not previously been involved how the operation works and to remind those clubsth who have helped in recent years that the deliver dates this year are Saturday 4 and Sunday 5th December.

Volunteers carry out the whole operation. Last year nearly \$126,000 was raised, that's about \$500 per delivery vehicle, and went towards alleviating poverty and social injustice within Australia and overseas. That's a total of over \$98,000 raised by members of Victorian Four Wheel Drive Clubs.

We ask for drivers, navigators and vehicles that can carry 8 to 25 freshly cut trees, with or without a trailer. Many 4WD clubs have found this a fun activity that makes a considerable contribution to the larger community in which we live.

We meet at the Scout Hall, Pakenham St., Blackburn (Melway Map 47 H 12) on Saturday 4 December, or Princes Hill Primary School, Wilson St., Nth Carlton (Melway 29 J 11) on Sunday 5 December. On Saturday we deliver to the south and eastern side of Melbourne and on the Sunday the north and western side. You pick the area you would like to deliver the trees, and the day and time (between 6am and 11am on Saturday and 7-10am on Sunday) you arrive at the depot. We give you a very well organized list of addresses with Melway grid references, all in close proximity to each other. All you do is drop off the tree that has already been paid for. The smiles you receive from the younger recipients would be second only to that of them greeting Santa Claus. It will take each team 1 to 3 hours, and we encourage you to meet for a BBQ or social get together before or afterwards. If your club can help I would appreciate a phone call with the approximate number of vehicles by late October and I would immediately forward you a form (or use the blank Excel Spread Sheet that should be attached with this doc-

ument) so the details of each driver can be filled in and returned to us by the end of November. Please email or phone me if you would prefer I post your club a hard copy form now to pass around at your next club meeting for volunteers to add their details.

For further information or for a quest speaker to address your members at a future club meeting about the delivery or the type of self help projects that the money raised will support please contact me on 94973227 (home or work) or write to: 51 Belmont Rd Ivanhoe 3079. email: briangum@tpg.com.au

Last year the following 4WD clubs generously donated their services: Idlers, Adventurers, CFA, Jackaroo, Nissan, LROCV, Melb. Jeep Owners, Pajero, Range Rover, CH4WD, Subaru, Toyota Landcruiser, VFWD, Wanderers, Toyota, Getabout, Port Phillip and City West, a total of 19 clubs and about 175 vehicles (plus 50 vehicles from Oxfam's other supporters). Also Four Wheel Drive Victoria threw their weight behind the event and in the past has managed to attract television news coverage of the great work being done by club volunteers. Each of the above groups seemed impressed with the nature of the cause and our organization and indicated a desire to be involved again.

For those club members who may like to purchase a delivered Christmas tree please feel free to mention in your news letter our web site for online orders: www.fitzroyoxfam.org.au or our phone number. Orders start early November.

Each year I do the rounds of the media to promote tree sales and always mention the great support given by 4WD clubs. Last year a 8 minute interview with John Faine on Radio 774 netted an extra 550 orders. Our feedback is that listeners are so keen to support a good cause when they know that everyone involved is a volunteer and no middle person profits. In the past I have been fortunate enough to have the opportunity on Macca's 'Australia All Over' to give all involved a mention and let the listeners know this tremendous fundraiser could not happen with generous support by volunteer 4WD club members.

Finally I'd like to thank once again all those clubs and members who have so generously supported this vital community fundraising activity over past years.

Thanking you in anticipation for your support this year.

Brian Moran
Volunteer
Coordinator Oxfam Australia Christmas Tree Project
Phone 94973227 Fax 94994759
Email: bringum@tpg.com.au